



FUNDERMAX®

COLLECTION 2018

LAMINATE

EXTERIOR



for
people
who
create

GIBCA



جیبیکا

GIBCA FURNITURE INDUSTRY CO. LTD. (LLC)

About Gibca

Gibca Furniture Industry Co. LTD. (LLC), part of Gibca group, is a leading manufacturer of premium contract furniture. Since our establishment in the 1990s, we have provided innovative and quality work space solutions for over 50,000 installations throughout Middle East, Central Asia and Africa. By fostering the culture of innovation and creativity we've established ourselves as the region's leading space management solution providers.

Understanding our every client's objectives, we work with them to create work space solutions for today and give them the flexibility for future change. Our modern state of the art facility allows us to develop innovative and quality products to serve our client's needs.

Our highly-qualified technical team provides customized service to our clients from the design phase to the after sales service. They work with each client to identify their project objectives, make knowledgeable recommendations, prepare quotes, technical drawings and budgets. Our range of highly engineered products are build and assembled in our state of the art facility under strict quality controlled environment. When working with us, you can rest assured that the product you receive is of top quality workmanship.



About Fundermax

FunderMax is an Austrian company steeped in tradition. Just like the raw materials they work with – Fundermax have grown organically too - from a small family business into a top international player. Their roots are in wood processing, with a product portfolio featuring the highest quality materials made from wood and laminates. As such, Fundermax see themselves as experts.

Fundermax is constantly developing. Pushing their effort to set the pulse and be a trendsetter for all of our customers in both industrial and private sectors. They're just as committed to their employees too. Fundermax's ultimate goal is to inspire through their designs, and to convince by delivering sustainable value.



What Max Exterior Can Do

Max Exterior panels are duromer high-pressure laminates (HPL) in accordance with EN 438-6 Type EDF that are produced in lamination presses under great pressure and high temperature. Double-hardened acrylic PUR resins provide extremely effective weather protection that is particularly suitable for longlasting balconies and façade claddings.



PROPERTIES*:

- Weather resistant to EN ISO 4892-2
- lightfast acc. to EN ISO 4892-3
- Double hardened
- Scratch resistant
- Solvent resistant
- Hail resistant
- Easy to clean
- Impact resistant EN ISO 178
- Suitable for all exterior applications
- Decorative
- Self-supporting
- Bending resistant EN ISO 178
- Frost resistant -80°C to 180°C (DMTA- OFI 300.128)
- Heat resistant -80°C to 180°C (DMTA- OFI 300.128)
- Easy to install



EXTREMELY WEATHER RESISTANT



SOLVENT RESISTANT



OPTIMAL LIGHT-FASTNESS



EASY TO CLEAN



DOUBLE HARDENED



IMPACT RESISTANT



SCRATCH RESISTANT



EASY TO INSTALL

Finishes

The curtain rises. Awaiting behind it are shimmering colours, expressive textures and millions of possible combinations. Tap into this source of inspiration and lend your buildings an unmistakable character.



NT

The silk-matte look with a feel of fine hammer embossed finish.



NG

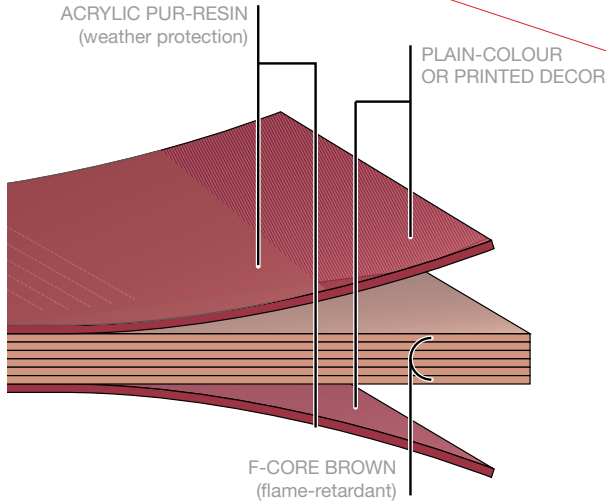
The glossy high-class touch that enhances any decor.



NH

Our surface with the specially printed hexagon pattern – slip-free and ideal for that special emphasis.

STRUCTURE MAX EXTERIOR PANEL



PHYSICAL DATA

PROPERTIES	TEST METHOD	ASSESSMENT	STANDARD VALUE	ACTUAL VALUE
LIGHT-FASTNESS AND WEATHER RESISTANCE (SURFACE NT)				
Artificial weathering*	EN ISO 4892-2 3000 h	EN 20105-A02 greyscale	≥ 3	4-5
MECHANICAL PROPERTIES				
Apparent density	EN ISO 1183-1	g/cm ³	≥ 1,35	≥ 1,35
Flexural strength	EN ISO 178	MPa	≥ 80	≥ 80
Modulus of elasticity	EN ISO 178	MPa	≥ 9.000	≥ 9.000
Coefficient of thermal expansion	DIN 52328	1/K		18 x 10 ⁻⁶
Thermal conductivity		W/mK		0,3
Water vapour diffusion resistance				ca. 17.200 μ
FIRE BEHAVIOUR				
Europe	EN 13501-1	MA39-VFA Vienna	Euroclass B-s2, d0 für 6 - 13** mm	
Switzerland		EMPA Dübendorf	Fire classification 5.3 für 6 - 13 mm	
Germany	DIN 4102	MPA-Hannover	B1 für 6 - 10 mm	
France	NFP 92501	LNE	M1 für 2 - 10 mm	
Spain	UNE 23727-90	LICOF	M1 für 6 - 10 mm	
PERMITS				
Façade permit Germany		Institut für Bautechnik Berlin	6, 8, 10 mm, Approval-No. Z-10.3-712	
ETB guidelines for building components which safeguard against falls, June 1985. Balcony railings.		TU Hannover	Passed (depending on building regulation and railing construction 6, 8 or 10 mm panel thickness)	
Avis technique Frankreich		CSTB	6, 8, 10 und 13 mm, wood- and metal subconstruction Avis Technique n° 2/10-1427 Avis Technique n° 2/10-1504 Avis Technique n° 2/10-1505 Avis Technique n° 2/10-1513 Avis Technique n° 2/10-1522	

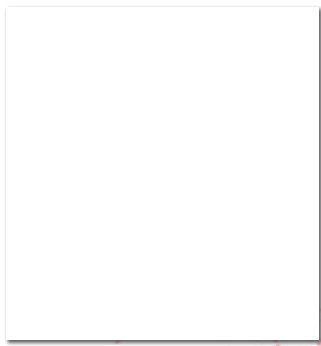
FOR THE SURFACE NT APPLIES A GLOSS DEGREE TOLERANCE OF +/- 5 GE MEASURED AT 60°

*DECOR AUTN: ARTIFICIAL WEATHERING EN ISO 4892-2: 1500H; ASSESSMENT ACCORDING GREYSKALE EN 20105-A02: 2

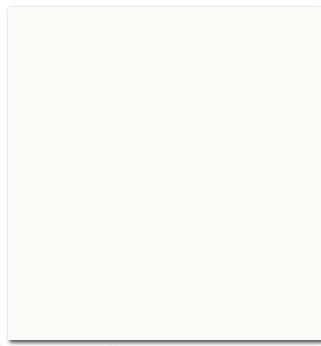
*DECOR INDIVIDUALDECOR: ARTIFICIAL WEATHERING EN ISO 4892-2: 3000H; ASSESSMENT ACCORDING GREYSKALE EN 20105-A02: 3

**EXCEPTION IS PODIO-BALCONY FLOOR PANEL; EUROCLASS B-S2,D0 FOR 6 - 20 MM

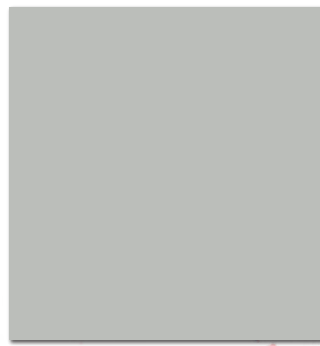
ALL THE RESPECTIVE CURRENT CERTIFICATES AND APPROVALS ARE AVAILABLE IN THE DOWNLOAD SECTION AT WWW.FUNDERMAX.AT. PLEASE OBSERVE ALL VALID BUILDING REGULATIONS. WE WILL ASSUME NO RESPONSIBILITY IN THIS REGARD.



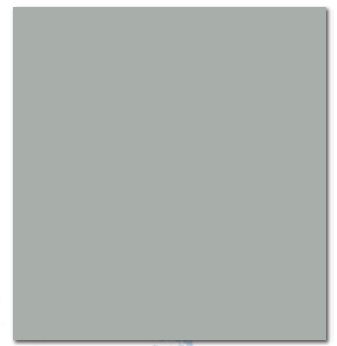
0091 Starlight



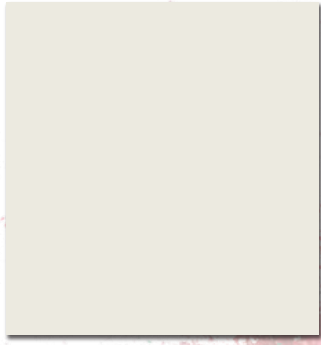
0085 White



0074 Pastel Grey



0776 Concrete Grey



0742 Pebble Grey



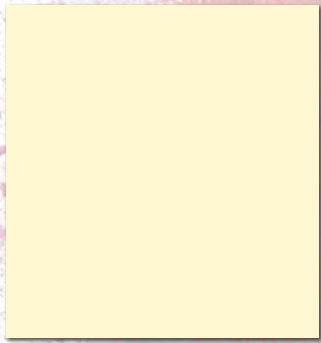
0741 Birch Grey



0070 Carbon Grey



0687 Maize



0065 Ivory



0687 Maize



6010 Electric



0162 Afro Sahara



6020 Satsuma



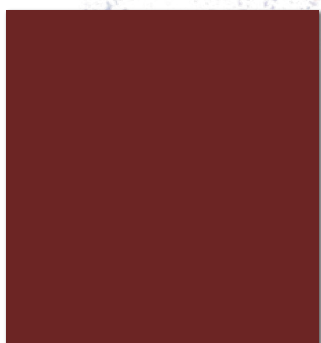
0736 Saffron



0674 Mars Red



0661 Terracotta



0691 Purple



0065 Ivory

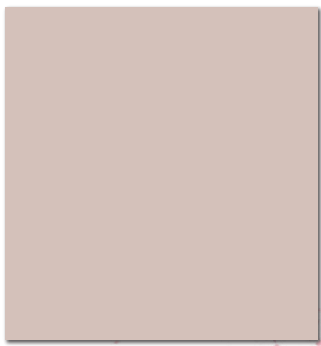


3003 Rubinus Red



6030 Candy

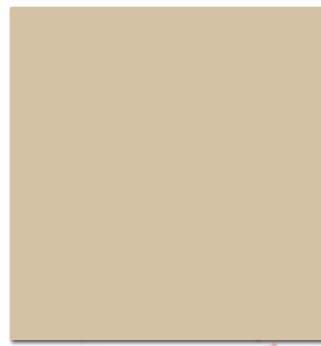




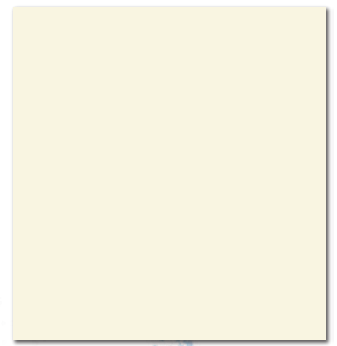
0693 Orchid



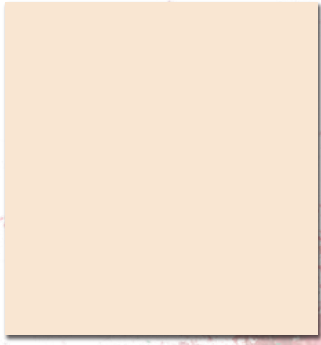
0692 Old Pink



0627 Hygienic Beige



0073 Pale Ivory



0651 Cream



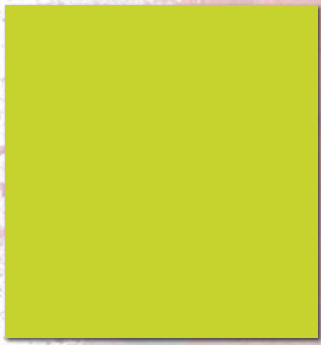
0066 Sand



0592 Kiwi Green



0662 Jade Green



0725 Yellowish Green



0623 Green



0056 Atlantis



0663 Reseda Green



0717 Atlantic



6050 Pool



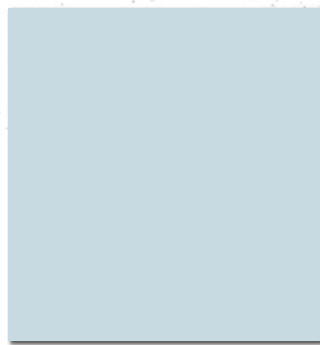
0631 Turquoise



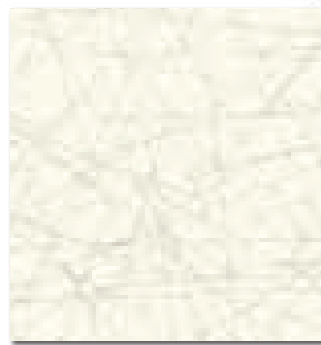
0703 Dove Blue



0712 Steel Blue



0706 Glacier Blue



0480 Kings Cross

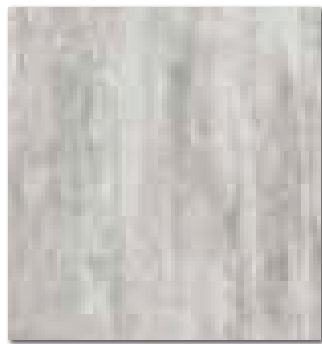


0925 Butterfly

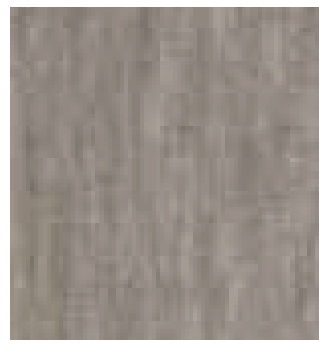




0421 Venus



0394 Moonwalk



0158 Afro Grey



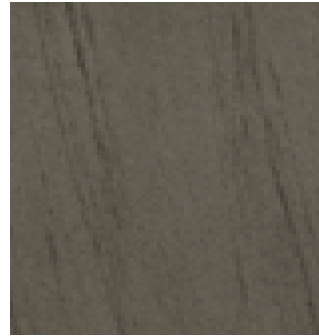
0497 Stonehenge



0496 Colosseum



0066 + GLITTER Sand + G



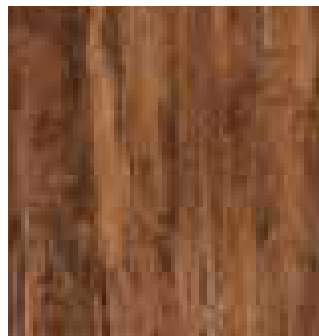
0406 Rockstar



0926 Jazz



0927 Creek



0930 Phoenix



0931 Akro Almond



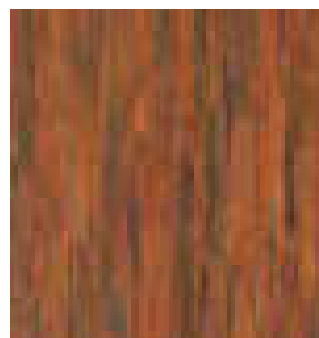
0386 Blues



0932 Akro Terra



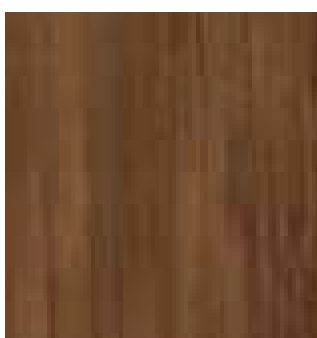
0927 Creek



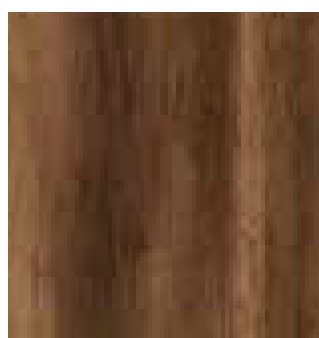
0798 Tambora



0924 Taurus



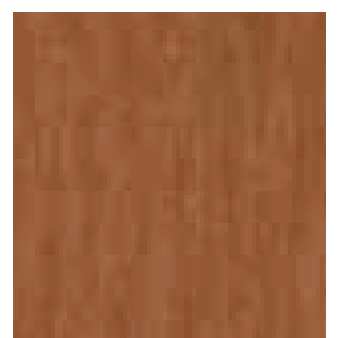
0922 NT Amazon



5173 Barrique Oak



0160 Dark Afro



0161 Light Afro





0794 Patina Bronze



0168 Akro Rust



0919 Ecuador



5171 Polar Oak



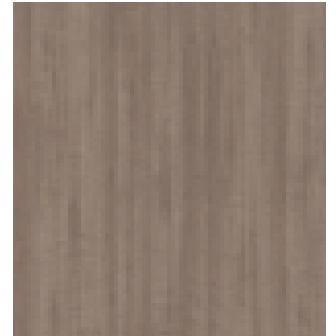
0935 Voyager



0923 Enigma



0801 Fir Platinum



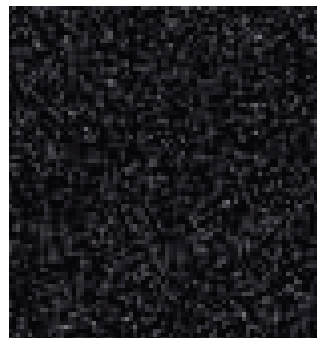
0936 Thunder



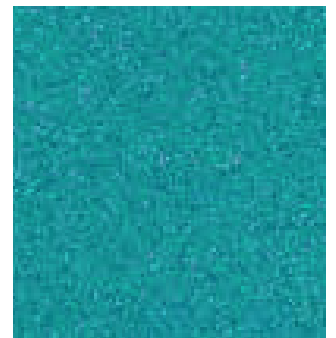
5032 + GLITTER
Cinnamon + G



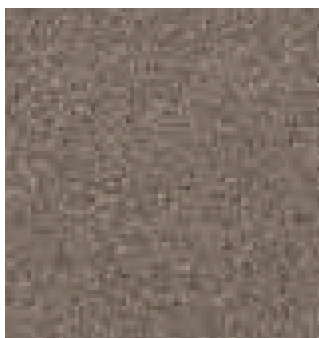
0077 + GLITTER
Charcoal + G



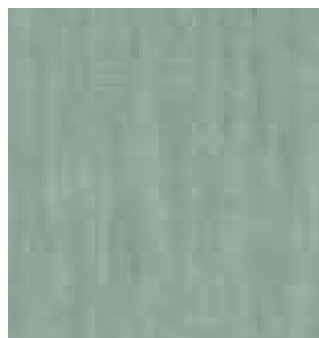
0080 + GLITTER
Black + G



0056 + GLITTER
Atlantis + G



0768 + GLITTER
Sparrow + G



0156 Afro Patina



0657 Sepia Brown



GIBCA  **جی بی کا**
GIBCA FURNITURE INDUSTRY CO. LTD. (LLC)

P. O. Box 20923, AJMAN - UAE
Tel : +971-6-7436888, Fax : +971-6-7436903
E-mail : info@gfiuae.com, Website : www.gfiuae.com



Please scan this QR code
with your Smartphone!

