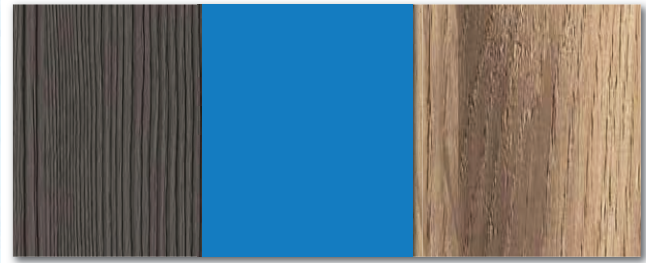


# COLLECTION 2018

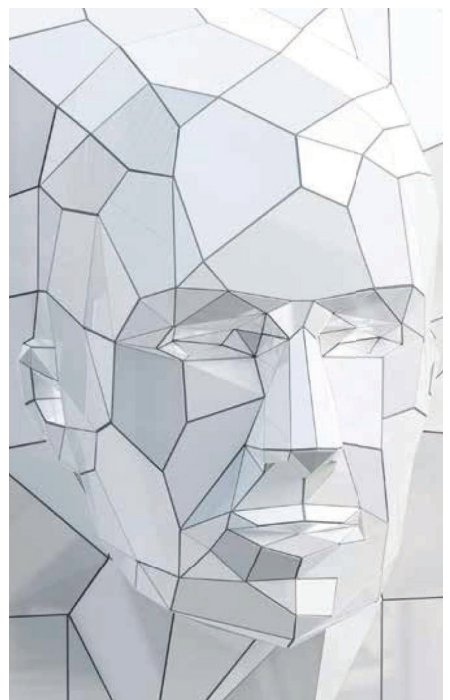
THIN LAMINATE

**INTERIOR**



**FUNDERMAX**®

**for  
people  
who  
create**



**GIBCA**



**جی بی سی**

GIBCA FURNITURE INDUSTRY CO. LTD. (LLC)



# About Gibca

Gibca Furniture Industry Co. LTD. (LLC), part of Gibca group, is a leading manufacturer of premium contract furniture. Since our establishment in the 1990s, we have provided innovative and quality work space solutions for over 50,000 installations throughout Middle East, Central Asia and Africa. By fostering the culture of innovation and creativity we've established ourselves as the region's leading space management solution providers.

Understanding our every client's objectives, we work with them to create work space solutions for today and give them the flexibility for future change. Our modern state of the art facility allows us to develop innovative and quality products to serve our client's needs.

Our highly-qualified technical team provides customized service to our clients from the design phase to the after sales service. They work with each client to identify their project objectives, make knowledgeable recommendations, prepare quotes, technical drawings and budgets. Our range of highly engineered products are build and assembled in our state of the art facility under strict quality controlled environment. When working with us, you can rest assured that the product you receive is of top quality workmanship.



# About Fundermax

FunderMax is an Austrian company steeped in its rich tradition, culture and values. FunderMax has grown organically just like the raw material they use for their products. It has transformed from a small family owned business into an international leader in the industry. Their roots are in the art of wood processing. Their product portfolio includes the highest quality materials made from wood and laminates.

FunderMax is constantly growing and evolving. Pushing the boundaries of creativity, they are the industry's leading trendsetters. They provide dedicated service to their industrial and private sector clientele and are committed to their employees. FunderMax's ultimate goal is to inspire through their designs and produce high quality products that adds great value to their client's projects.





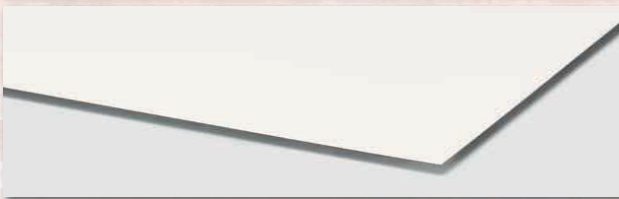
## The classic choice for furniture and interior design

High Compact Laminate is a highly durable and visually appealing product. This makes it the first choice for interior projects where high quality and aesthetic appeal is essential.



Manufactured using sophisticated technological process, Max HPL is characterized by its robustness, thermal resistance and versatility. It's versatility make it suitable for various interior applications.

Max HPL is a duroplastic high pressure laminate according to EN438-3\*. It's made up of several layers of resin-impregnated wood-fibers compacted under high pressure at high temperatures.



scratch resistant



solvent resistant



food grade



impact resistant



easy to clean



heat resistant



quick installation



durable

## Premium Surfaces

FunderMax is a source of inspiration and facilitator for striking interior design. Our exceptional finishes let you create the most unique and beautifully textured furniture, cabinets, wall cladding and doors.



### MT – MATT

This surface provides just the right balance between matt and shimmering elements. Impressive with its neutral appearance.



### SU – STRUCTURA

This refined surface with its porous structure is not only perfect for wood decors, it also offers a natural impact wit with plain decors.



### NA – NATURA

Naturally beautiful, with a delicate structure, this surface skillfully captures the natural beauty and resilience of nature, transferring them perfectly into the world of materials.



### LI – LIGNUM

The perfect partner for any wood decor. With its fine grain, this unique surface offers distinctive visual appeal and a truly tactile experience.

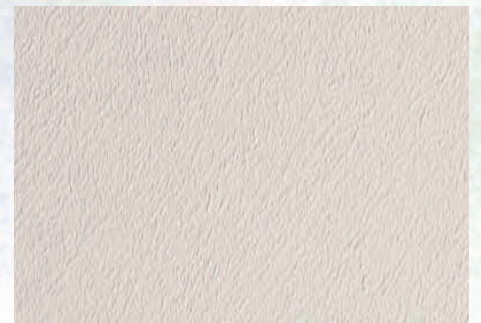


### SG – MIRROR GLOSS

Technically it's almost impossible to achieve a glossier look. Mirror gloss is a high quality surface with an impressive finish bringing elegance to every piece of furniture.

### GA – GRAFICA

Inspired by stone and concrete, this surface boasts a slightly rough finish, enhancing any decor with its exceptional, gentle light refraction.



\*Price varies based on SURFACE type  
\*GA, LI - only available in 0.8 mm



Grade: Standard

Standard Surface: FH

Size: 2800 mm x 1300 mm / 4100 mm x 1300mm

Thickness: 0.8 mm / 1.0 mm

## Physical Properties

FEATURE	TESTING STANDARD	UNIT OF MEASUREMENT	STANDARD VALUE	HGS / HGP ACTUAL VALUE	APTICO ACTUAL VALUE
Density	EN ISO 1183-1	g/cm <sup>3</sup>	≥ 1,35	≥ 1,35	≥ 1,35
Resistance to dry heat	EN 438-2:2016, 16	Appearance	≥ Grade 4	≥ 4	≥ 4
Resistance to moist heat	EN 438-2:2016, 18	Appearance	≥ Grade 4	≥ 4	≥ 4
Dimensional stability at elevated temperature	EN 438-2:2016, 17	%	length: ≤ 0,55 width: ≤ 1,05	length: ≤ 0,55 width: ≤ 1,05	length: ≤ 0,55 width: ≤ 1,05
Scratch resistance	EN 438-2:2016, 25	Appearance	≥ Grade 3	≥ 3	≥ 3
Resistance to surface abrasion	EN 438-2:2016, 10	Revolutions	≥ 150	≥ 150	≥ 150
Impact stress with small ball	EN 438-2:2016, 20	N	≥ 20	≥ 20	≥ 20
Resistance to immersion in boiling water	EN 438-2:2016, 12	Appearance	≥ Grade 4	≥ 4	≥ 4
Resistance to water vapour	EN 438-2:2016, 14	Appearance	≥ Grade 4	≥ 4	≥ 4
Resistance to staining	EN 438-2:2016, 26	Appearance	≥ Grade 4	≥ 4	≥ 4
Gloss level at measuring angle of 85°	EN ISO 2813	Surface reflection	-*	-*	≤ 12

\* DEPENDENT ON THE SURFACE STRUCTURE

### TYPE S (STANDARD QUALITY) OFI CERT HPL EN 438 HGS

The key characteristic of this quality are highly durable surfaces which are scratch and impact resistant. Due to their thickness, these surfaces are particularly resistant to boiling water, numerous household chemicals, as well as dry and damp heat.

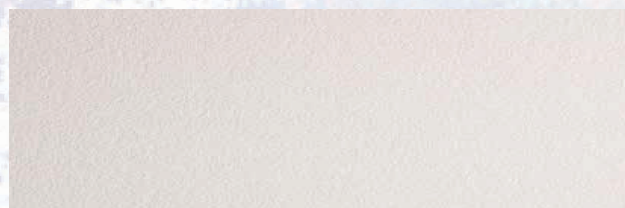
The reverse face of Max HPL panels is designed to ensure flawless adhesion to substrates (for example chipboard, plywood, etc).

### TYPE P (POSTFORMABLE QUALITY) OFI CERT HPL EN 438 HGP

Essentially, this quality corresponds to Type S (HGS), but can be used in pre-determined conditions such as temperature, heating times, etc. (postforming process).

During a cold forming process, cracking may occur with HPL laminate boards, irregardless of the size of the radius.

OFI CERT confirms compliance with EN 438.



#### Standard Surface:

#### FH – FINE HAMMER EMBOSSED

Versatile, easy to clean and highly resistant. One of our classic surfaces which has proved itself in interior design for many years.



The mark of responsible forestry  
FSC® C101966







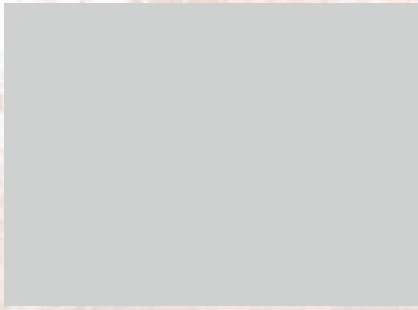
**0759** Graphite Black



**2206** Fango



**0648** Dark Brown



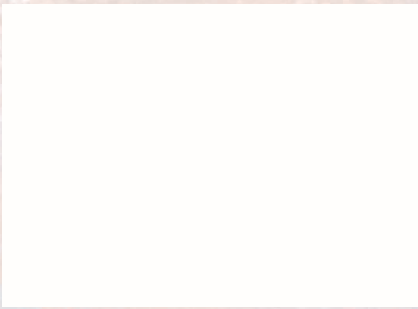
**0730** Ash Grey



**0755** Warm Grey Dark



**0023** Lamar



**2286** White Syringa



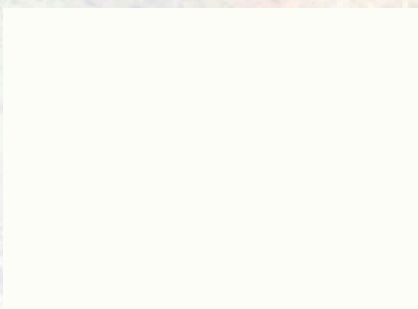
**0318** Ruby Red



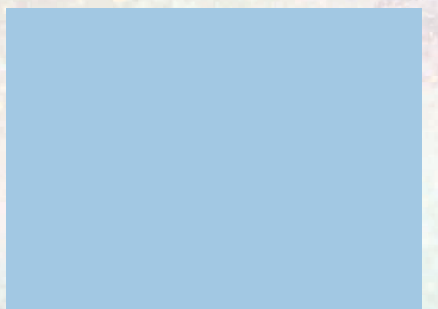
**0085** White



**0717** Atlantic



**0112** Top White



**0718** Arctic



**0042** Marino



**0630** Sea Green



**0041** Tortuga

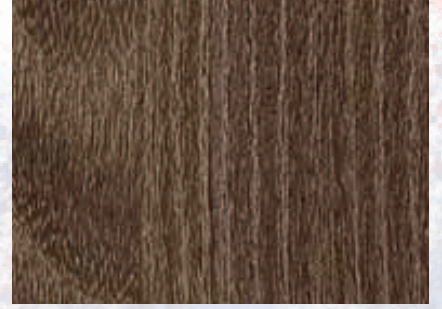




**0171** Tundra Birch



**0175** Knot Fir



**0244** Santos



**0252** Madera



**0290** Akari



**0474** Calimero



**0291** Beech II



**0047** Wild Beech



**0125** Natural Oak



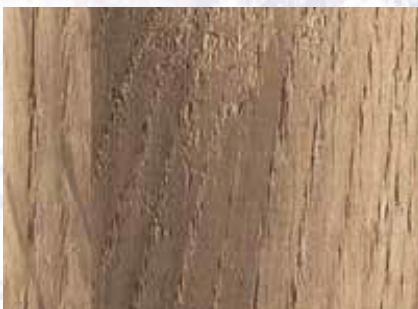
**0361** Serenissima



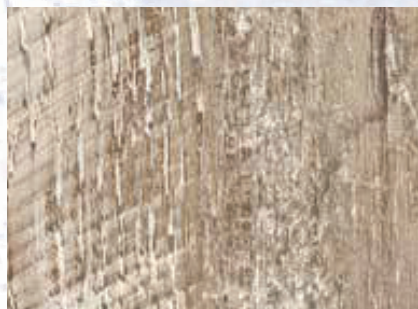
**0813** Rocco



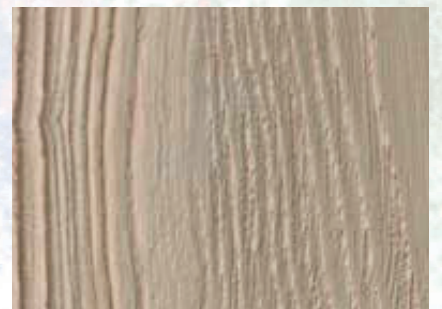
**0367** Alona



**0411** Albatros



**0414** Harlekin



**0424** Callisto

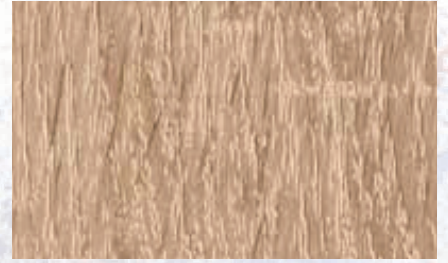




**0102** Maple



**0814** Canto



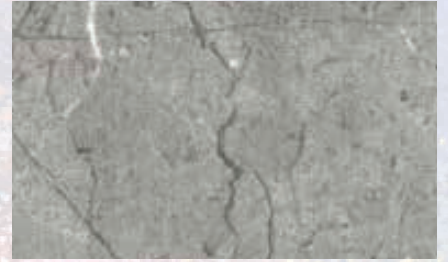
**0877** Light Sawcut Oak



**0921** Brown Silver Fir



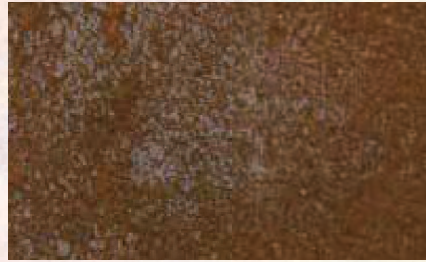
**0026** Prado Alu Grey



**0585** Castello



**0581** Lentos



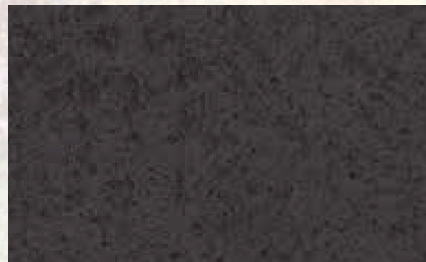
**0533** Sphinx



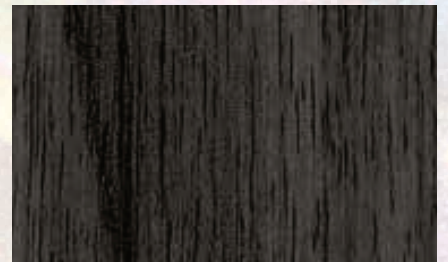
**0328** Brushed Aluminium



**0567** Manga



**0566** Kara



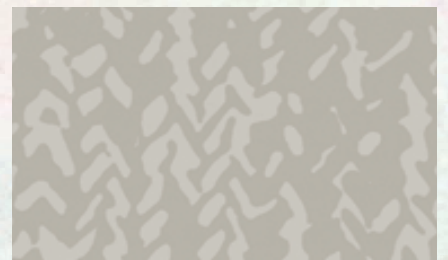
**0534** Monsun



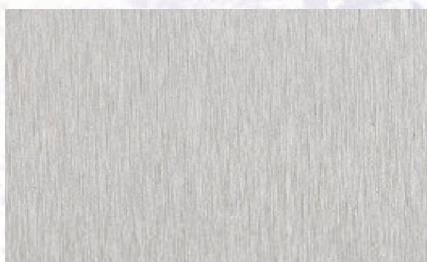
**0493** Prisma



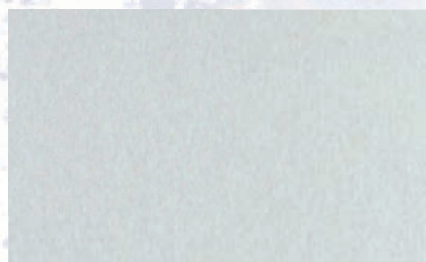
**0498** Nexus



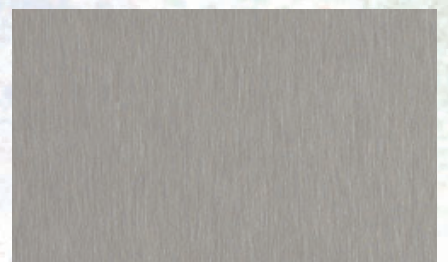
**0527** Lana



**M001** Natural Alu



**M002** Alu Topmatt



**M003** Alu Stainless Steel  
Nuance





**FUNDERMAX**®

**GIBCA**



جی بی سی

GIBCA FURNITURE INDUSTRY CO. LTD. (LLC)





### AP – APTICO

A patented technology makes this matt surface a sensation: easy to clean, very easy to work with and with an irresistible appearance. The result is characterized by a special anti-fingerprint effect.

#### At a glance

- Warm feel with a fine texture
- Easy to clean and very easy to work with
- Anti-fingerprint effect



### ANTI-FINGERPRINT FINISH



**0080** Black



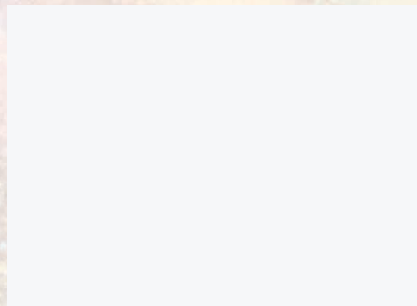
**0075** Dark Grey



**0077** Charcoal



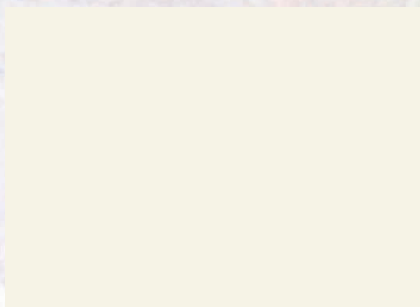
**0753** Cool Grey Medium



**0606** Arctic White



**0746** Hygienic Grey



**0733** Hygienic White



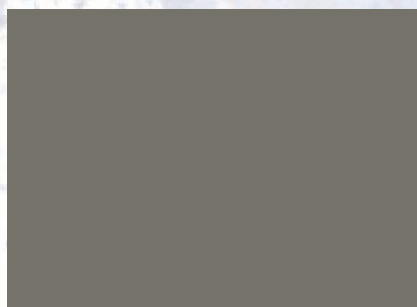
**0693** Orchid



**0018** Divaro

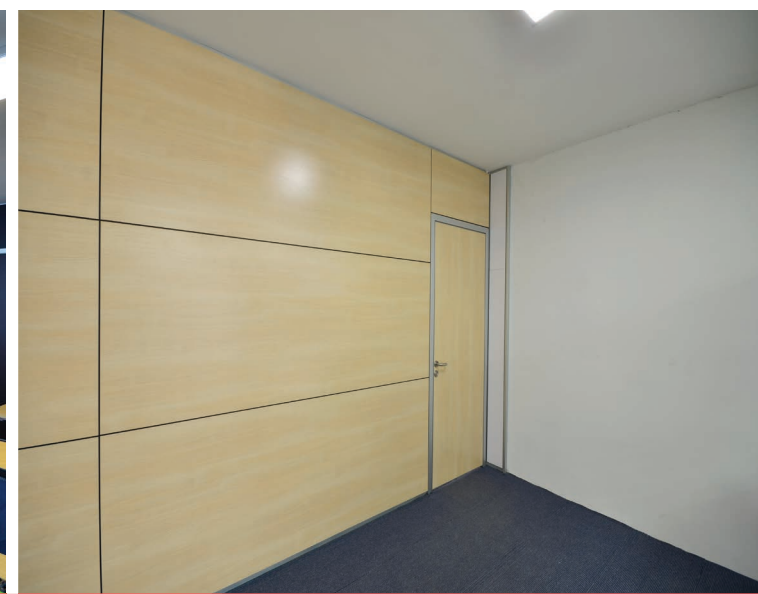


**2289** Tortora



**0755** Warm Grey Dark





***Be different. Be inspired. Bring your vision to life.***  
*Let your ideas come to life with our unique interior products.*



Please scan this QR code with your Smartphone!

**GIBCA**



**جی بی سی**

GIBCA FURNITURE INDUSTRY CO. LTD. (LLC)

P. O. Box 20923, AJMAN - UAE, ☎: +971-6-7436888, 📠: +971-6-7436903,

✉: info@gfiuae.com, 🌐: www.gfiuae.com

