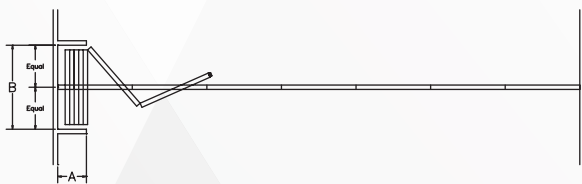




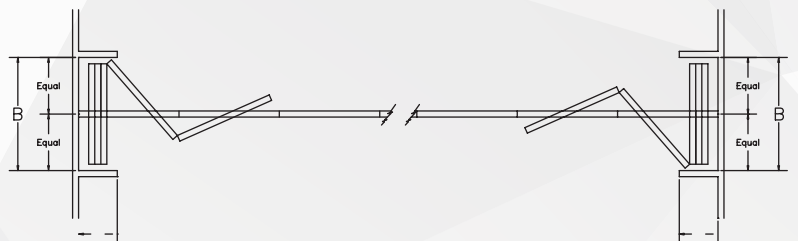
# 643E SERIES

The 643E offers panel finishes for the ultimate in design flexibility. Even the frames may be color matched to coordinate with the faces. The 643E is a popular choice for hotel meeting rooms, convention centers, commercial facilities, or other high use facilities.

## ELECTRICALLY OPERATED, CONTINUOUSLY HINGED (TRAIN) PANELS



SINGLE OPENING



BI - PARTING (OPTIONAL)

Panels are hinged together and are operated by two electric key switches for fast, safe set-up. The panels are nominally 4" [101] thick and have a 16 ga. Welded steel frame. The faces may be covered from a wide selection of vinyl colors and patterns. The face substrate varies by the level of sound control required (STC rating).

Top Supported

Center Stack

Continuously Hinged Panels

Electrically Operated

Maximum Height: 30'3"

[9.2m]

Standard Opening Width:

with Retractable bottom

seals:

100' [30.48m] single partition

w/Continuous contact

bottom seals:

157' 4" [47.9]

STC Ratings: 43, 47, 49, 52, 54

## Available Accessories/Options

- **Pass Door Inclusion Options** – Exit signs, Automatic door closers, panic hardware, locks, frame and prep for window, peep viewer
- **Pocket Doors for Partition Storage** – factory-finished or field-finished
- **Work Surface** – Inset or full-height dry erase steel marker boards, inset porcelain enamel steel dry marker or chalkboard, eraser pocket or tack boards
- **Acoustic Baffle**

## Suspension System

For panels to 1500 lbs. [680 kg]: Track shall be of clear anodized architectural grade extruded aluminum alloy 6063-T6.

For panels 1500-3000 lbs. [680-1364 kg]: Track shall be of 1/4" [6] formed black painted steel. Carriers may be programmed for self directing and sorting.

## Trim Colors - standard

Available in three standard trim colors - lamb's wool, Brown or Gray. Custom colors for metal trim are also available for an additional charge.

## "Standard" Product Features and Benefits:

**Feature:** Protective vertical trim (Available option: no vertical face trim.)

**Benefit:** Trim protects the panel edges and faces.

**Feature:** Mechanically retracted bottom seals

**Benefit:** Partition travels across the opening without causing damage to the floor and accommodates deflection and floor variance.

**Feature:** Bottom seal system with downward seal force.

**Benefit:** Maintains acoustics over time and adds stability to the partition when extended. Completely retracts during movement to eliminate floor damage.

**Feature:** Carrier on each panel

**Benefit:** Supports the weight of each panel and ensures smooth, even operation. Rub or guide rails not required.

**Feature:** Low profile hinges

**Benefit:** Safety and aesthetics - no unsightly hinges protruding from the panel faces.

**Feature:** Two key-controlled switches required to operate.

**Benefit:** Safety. There will be one operator on each side of the partition. Each can see if any person or obstruction is in the path of the partition during operation.

**Feature:** Emergency release (accessible from the floor in the stack area).

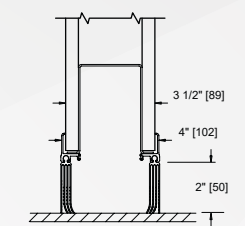
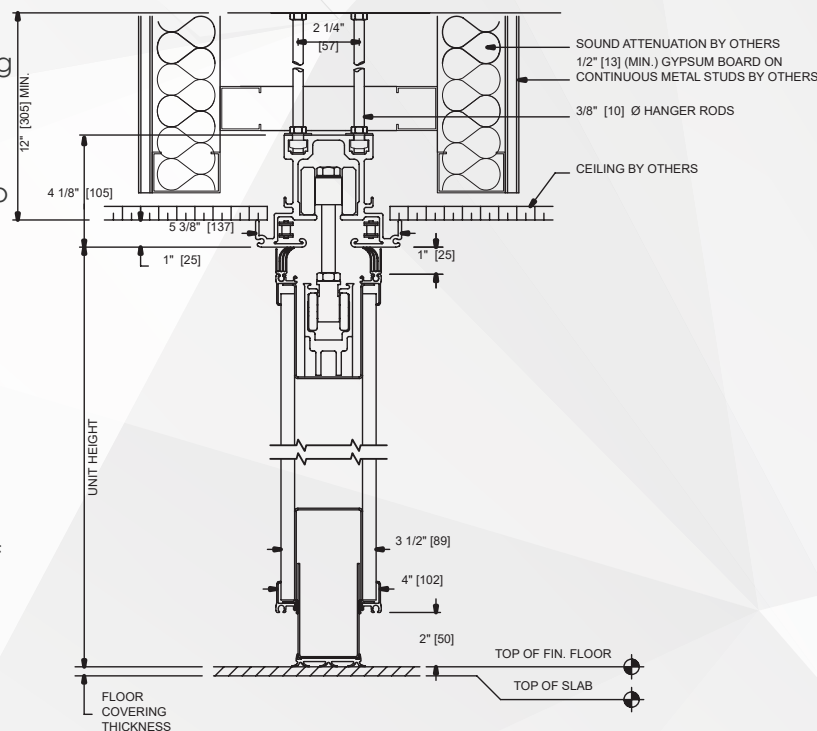
**Benefit:** Enables movement of the partition in the event of power failure.

**Feature:** Interlocking vertical seals

**Benefit:** Ensures panel-to-panel alignment and prevents sound leaks between panels.

**Feature:** Slow stop and start movement

**Benefit:** Smooth and quiet operation for increased longevity of system.



Optional: Bottom continuous contact (sweep) seals

GIBCA



جيبكا

GIBCA FURNITURE INDUSTRY CO. LTD. (LLC)

