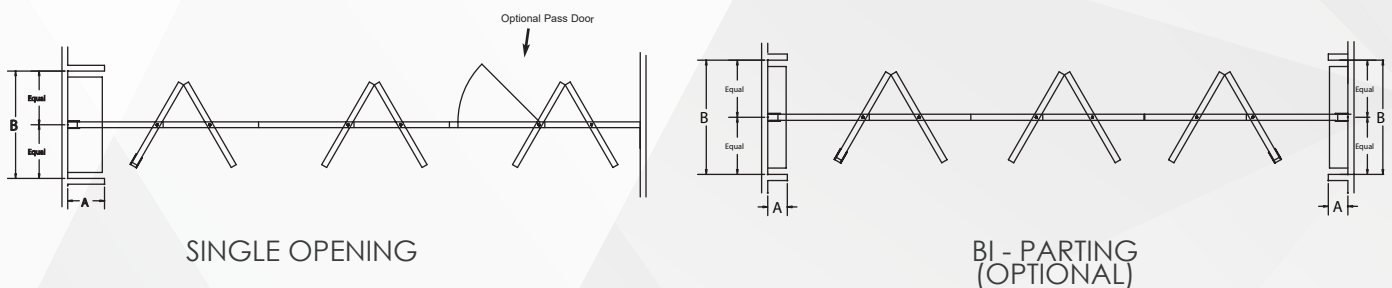




# 642 SERIES

The 642 offers panel finishes for the ultimate in design flexibility. Even the frames may be color matched to coordinate with the faces. The 642 is a popular choice for hotel meeting rooms, convention centers, commercial facilities, or other high use facilities.

## PAIRED PANELS



Select for wall-to-wall space division. Panels are hinged in pairs allowing fast setup. They may be stacked at either or both ends of the track or in a "pocket". One or more pair of panels may be placed anywhere along the track for use as sight dividers.

The panels are nominally 4" [101] thick and have a 16 ga. Steel welded frame. The faces may be covered from a wide selection of vinyl colors and patterns.

## Available Accessories/Options

**Top Supported**

**Center Stack**

**Paired Panels**

**Manually Operated**

**Maximum Height: 24'3"**

[7391]

**Maximum Opening Width:**

Unlimited

**STC Ratings: 43, 47, 49, 52,**

54, 55 & 56

- **Pass Door Inclusion Options** – Exit signs, Automatic door closers, panic hardware, locks, frame and prep for window, peep viewer
- **Pocket Doors for Partition Storage** – factory-finished or field-finished
- **Work Surface** – Inset or full-height dry erase steel marker boards, inset porcelain enamel steel dry marker or chalkboard, eraser pocket or tack boards
- **Acoustic Baffle**

## Suspension System

**Suspension Systems** - For panels weight up to 900 lbs (409kgs) track shall be of clear anodized architectural grade extruded aluminium alloy 6063-T6.

## Trim Colors - standard

Available in three standard trim colors - lamb's wool, Brown or Gray. Custom colors for metal trim are also available for an additional charge.

## "Standard" Product Features and Benefits:

**Feature:** Protective vertical trim (Available option: no vertical face trim.)

**Benefit:** Trim protects the panel edges and faces plus it provides a handhold when moving panels.

**Feature:** Quick-set retractable top & bottom seals

**Benefit:** Retractable seals accommodate out-of-level floor conditions; provide constant force for consistent sound control and stability when the seals are set. When retracted, nothing drags on the floor or track when the panels are moved. Panels can be "locked" in place.

**Feature:** Retractable seals exert seal force

**Benefit:** Provides constant force against floor and track for optimum acoustics even on carpet or other porous floor materials. Maintains panel stability when the seals are set.

**Feature:** Waist high seal activator

**Benefit:** Fast, easy seal activation without bending or stooping.

**Feature:** Removable operating handle.

**Benefit:** Prevents unauthorized operation.

**Feature:** Expanding Jamb Closure (Lever Closure) Panel

**Benefit:** Exerts 250 lbs [113.4 kg] of force against the fixed wall. The compression creates tight panel joints for optimum sound control.

**Feature:** Interlocking vertical seals

**Benefit:** Ensures panel-to-panel alignment and prevents sound leaks between panels.

**Feature:** Low profile hinges

**Benefit:** Safety and aesthetics - no unsightly

**Feature:** 2" [51] Retractable top & bottom seals.

**Benefit:** Retractable seals accommodate out-of-level floor conditions. When retracted, nothing drags on the floor or track when the panels are moved. Panels can be locked in place.

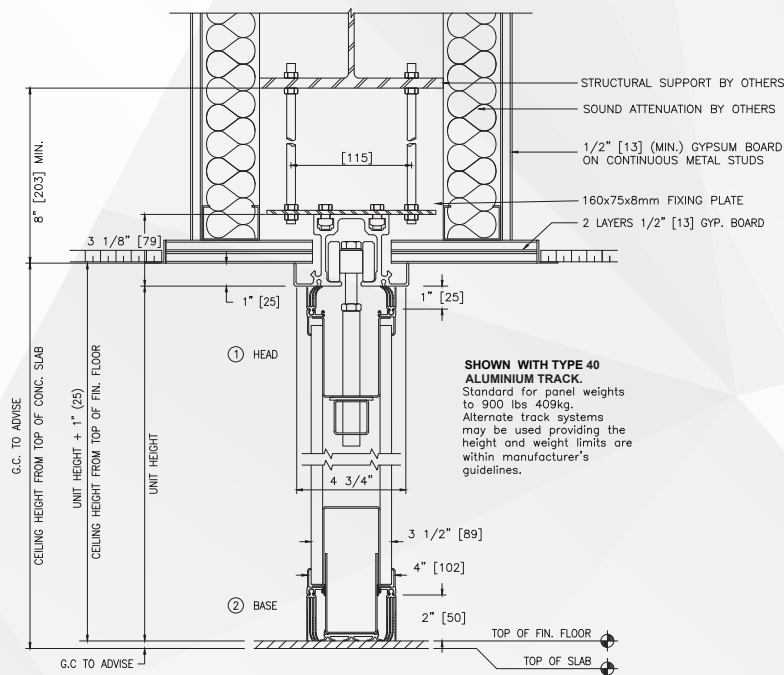
### Finishes:

#### Face finish shall be:

- Factory applied reinforced vinyl/fabric with woven backing.

-Optional:

1. Customer Selected
2. Unfinished for field decoration.
3. Wood Veneer
4. High pressure laminate



VERTICAL SECTION 642 SERIES

SCALE: N.T.S.

