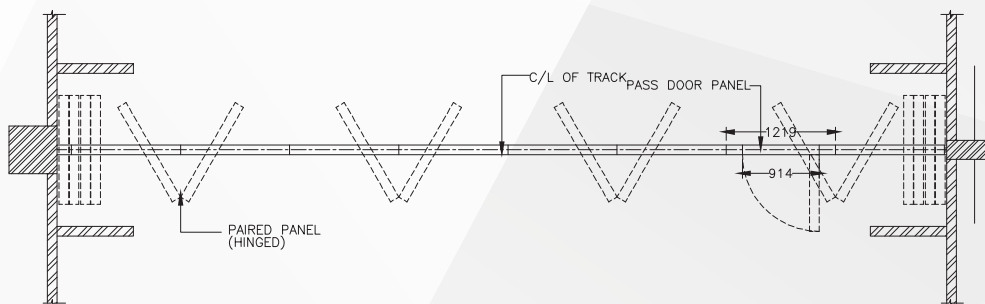




632 SERIES

Series 632 panels offer a wide choice of finish options, accessories, and sound control levels.

PAIRED PANELS



Select for wall-to-wall space division. Panels are hinged in pairs allowing fast setup. They may be stacked at either or both ends of the track or in a "pocket". One or more pair of panels may also be placed anywhere along the track for use as sight dividers.

The panels are nominally 3" [76] thick and have a welded frame of 16 ga. steel. The retractable seals are Quick-Set™ which means they are easily extended or retracted with only a 1/2 turn of the removable handle. The face substrate varies by the level of sound control required (STC rating).

Top Supported
Center Stack
Paired Panels
Manually Operated
Maximum Opening Height:
 24'3" [7391]
Maximum Opening Width:
 Unlimited
STC Ratings: 41, 43, 47, 49, 51

Available Accessories/Options

- **Pass Door Inclusion Options** – Exit signs, Automatic door closers, panic hardware, locks, frame and prep for window, peep viewer
- **Pocket Doors for Partition Storage** – factory-finished or field-finished
- **Work Surface** – Inset or full-height dry erase steel marker boards, inset porcelain enamel steel dry marker or chalkboard, eraser pocket or tack boards
- **Acoustic Baffle**

Suspension Systems

For panels weight up to 900 lbs (409kgs) track shall be of clear anodized architectural grade extruded aluminium alloy 6063-T6.

Trim Colors - standard

Available in three standard trim colors - lamb's wool, Brown or Gray. Custom colors for metal trim are also available for an additional charge.

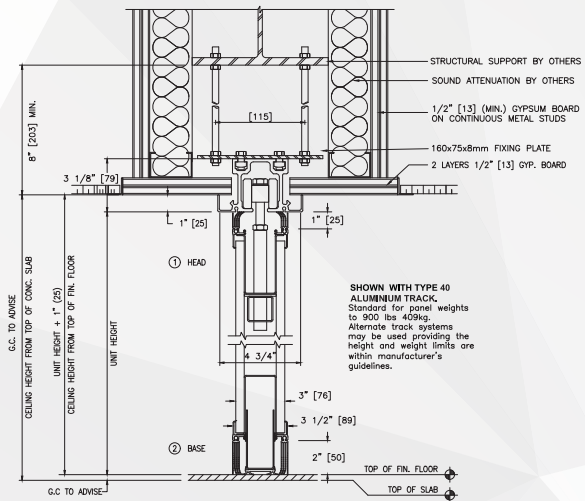
"Standard" Product Features and Benefits:

- Feature:** Protective vertical trim (Available option: no protective vertical face trim.)
Benefit: Trim protects the panel edges and faces plus it provides a handhold when moving panels.
- Feature:** Quick-Set™ Retractable Seals.
Benefit: The retractable seals are Quick-Set™ which means they are easily extended or retracted with only a 1/2 turn of the removable handle. No tedious cranking needed to set the seals.
- Feature:** 2" [50] retractable bottom seals
Benefit: Retractable seals accommodate out-of level floor conditions. When retracted, nothing drags on the floor when the panels are moved. Panels can be "locked" in place.
- Feature:** Retractable bottom seals exert downward seal force
Benefit: Provides constant force against floor for optimum acoustics even on carpet or other porous floor materials. Maintains panel stability when the seals are set.
- Feature:** Waist high seal activator for quick set retractable seals.
Benefit: Fast, easy seal activation without bending or stooping.
- Feature:** Removable operating handle.
Benefit: Prevents unauthorized operation.
- Feature:** Expanding Jamb Closure (Lever Closure) Panel
Benefit: Exerts 250 lbs [113.4 kg] of force against the fixed wall. The compression creates tight panel joints for optimum sound control.
- Feature:** Interlocking vertical seals
Benefit: Ensures panel-to-panel alignment and prevents sound leaks between panels.
- Feature:** Low profile hinges
Benefit: Safety and aesthetics - no unsightly hinges protruding from the panel faces.

Finishes:

Face finish shall be:

- Factory applied reinforced vinyl/fabric with woven backing.
- Optional:
 1. Customer Selected
 2. Unfinished for field decoration.
 3. Wood Veneer
 4. High pressure laminate



VERTICAL SECTION 632 SERIES
 SCALE: N.T.S.

