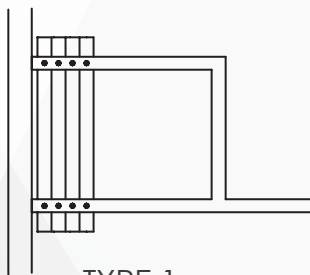




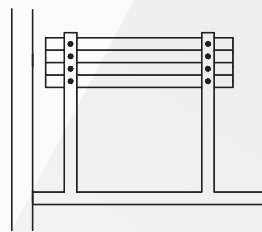
631 SERIES

Series 631 panels offer a wide choice of finish options, accessories, and sound control levels.

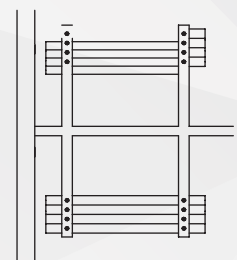
INDIVIDUAL, OMNI-DIRECTIONAL PANELS



TYPE 1



TYPE 2



TYPE 3

*Contact Gibca for other available options

Individual, manually operated panels offer optimum room flexibility. The track system enables panels to negotiate turns and be used in alternate locations. The panels are nominally 3" [76] thick and have a welded frame of 16 ga. steel. The face substrate varies by the level of sound control required (STC rating).

Top Supported Side Stack

Individual,

Omni-Directional Panels

Manually Operated

Maximum Opening Height:

24'3" [7391]

Maximum Opening Width:

Unlimited

STC Ratings: 41, 43, 47, 49,

51

Available Accessories/Options

- **Pass Door Inclusion Options** – Exit signs, Automatic door closers, panic hardware, locks, frame and prep for window, peep viewer
- **Pocket Doors for Partition Storage** – factory-finished or field-finished
- **Work Surface** – Inset or full-height dry erase steel marker boards, inset porcelain enamel steel dry marker or chalkboard, eraser pocket or tack boards
- **Acoustic Baffle**

Suspension Systems

For panels weight up to 1000 lbs (455kgs) track shall be of clear anodized architectural grade extruded aluminium alloy 6063-T6.

Trim Colors - standard

Available in three standard trim colors - lamb's wool, Brown or Gray. Custom colors for metal trim are also available for an additional charge.

"Standard" Product Features and Benefits:

Feature: Protective vertical trim (Available option: no protective vertical face trim.)

Benefit: Trim protects the panel edges and faces plus it provides a handhold when moving panels.

Feature: Quick-Set™ Retractable Seals.

Benefit: The retractable seals are Quick-Set™ which means they are easily extended or retracted with only a 1/2 turn of the removable handle. No tedious cranking needed to set the seals.

Feature: 2" [50] retractable bottom seals

Benefit: Retractable seals accommodate out-of level floor conditions. When retracted, nothing drags on the floor when the panels are moved. Panels can be "locked" in place.

Feature: Retractable bottom seals exert downward seal force

Benefit: Provides constant force against floor for optimum acoustics even on carpet or other porous floor materials. Maintains panel stability when the seals are set.

Feature: Waist high seal activator for quick set retractable seals.

Benefit: Fast, easy seal activation without bending or stooping.

Feature: Removable operating handle.

Benefit: Prevents unauthorized operation.

Feature: Expanding Jamb Closure (Lever Closure) Panel

Benefit: Exerts 250 lbs [113.4 kg] of force against the fixed wall. The compression creates tight panel joints for optimum sound control.

Feature: Interlocking vertical seals

Benefit: Ensures panel-to-panel alignment and prevents sound leaks between panels.

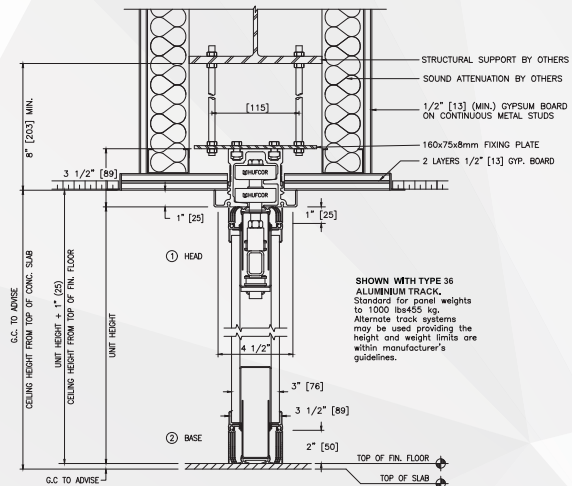
Finishes:

Face finish shall be:

- Factory applied reinforced vinyl/fabric with woven backing.

-Optional:

1. Customer Selected
2. Unfinished for field decoration.
3. Wood Veneer
4. High pressure laminate



VERTICAL SECTION 631 SERIES
SCALE: N.T.S.

GIBCA



جيبكا

GIBCA FURNITURE INDUSTRY CO. LTD. (LLC)



P. O. Box 20923, AJMAN - UAE

☎: +971-6-7436888

☎: +971-6-7436903

✉: info@gfiuae.com

🌐: www.gfiuae.com

Follow us on:

