

PROVEN EXPERTISE

26 Countries 50,000 Installations

OPTIMIZING SPACE IS AN ART,

WE HELP YOU PERFECT IT!

GIBCA



جییکا

GIBCA FURNITURE INDUSTRY CO. LTD. (LLC)



GIBCA Furniture Industry Co. Ltd. (LLC) which is a part of GIBCA Group has been long recognized as one of the leading manufacturers and suppliers of contract location furnishings.

Established in the early 1990's, its defining features are its quality and potential to innovate. Trusted by architects and contractors worldwide, GFI has made over 50,000 installations spanning Middle East, Central Asia and North Africa.

The culture of innovation and creativity has established GFI as the leading space management solution provider in the region. All our products help exploit to the fullest; the potential that every space offers.

Our state of the art manufacturing facility and an extremely talented technical team turns out a wide range of custom made products which affirm our reputation for expertly engineered design and top quality workmanship.

We seek to provide each of our customers highly personalized service right from design to after sales.

Our goal is simple - we help you manage your space better!





HUFCOR
Operable Walls
Acoustic Movable Walls
Vertical Lift Walls



CROWN
Automatic Hydraulift
Architectural Doors & Windows



Compact Laminate Products



Office Demountable Partitions



THE GIBCA RANGE OF PRODUCTS



ARCTURA
Ceiling and Wall Solutions



acristalia
Glass Enclosures for Terrace Solutions



Pivot Doors



Hufcor Inc. USA, with 350,000 Installations World Wide, is the World's Largest Manufacturer of Operable Partitions, Glasswalls and Portable Walls.

- ◆ Acoustic Flexibility
- ◆ Unlimited Space Division
- ◆ Ease of Operation
- ◆ Manual, Semi-automatic & Automatic Operation

Proud to have Most of the Leading Hotels as our Customers



FRAMELESS

A transparent barrier that protects without compromising the view



WEATHER RESISTANT

Enjoy the outdoors from the comfort of a climate controlled environment



ACOUSTIC

Effectively block sound and yet have a clear view



- ◆ Patented hydraulic SST lifting system
- ◆ Clear view with better weather seal and security
- ◆ Welded steel construction compatible with standard store front systems
- ◆ Only system tested for air, water & wind loads (+/- Pressures)



BIFOLD DOORS



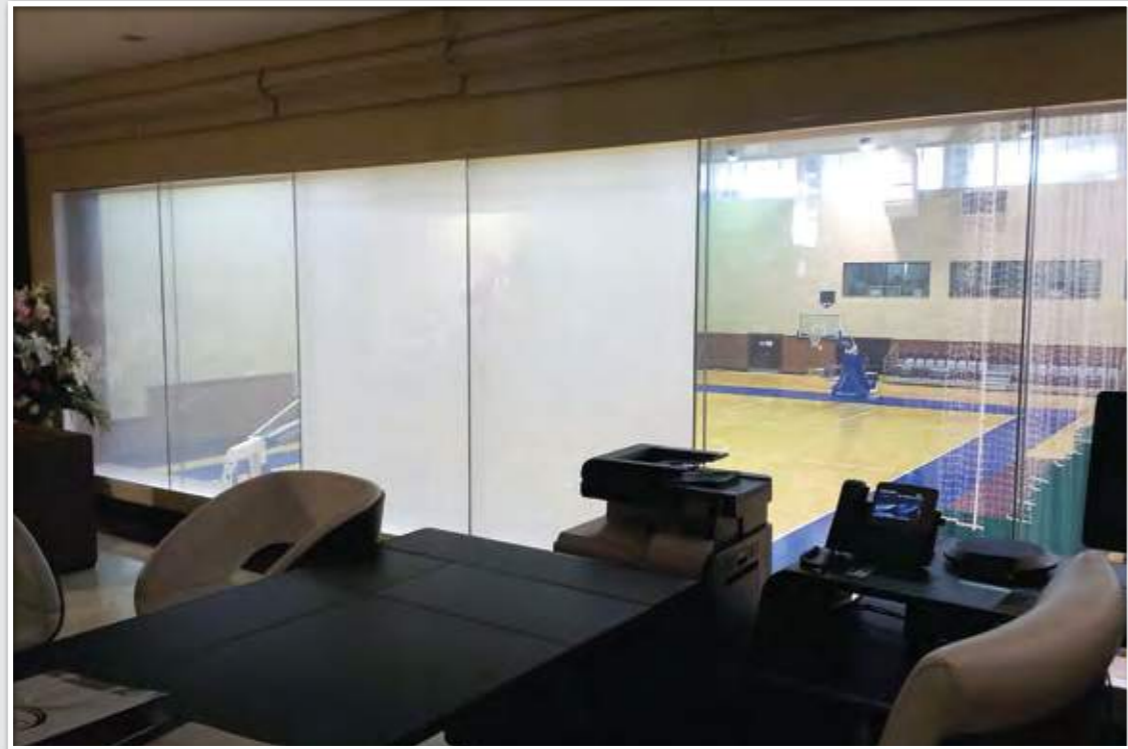
AUTOMATIC

- ◆ Suitable for large opening widths
- ◆ Intelligent control unit with self diagnostic features
- ◆ Security metal trims
- ◆ Wear resistant
- ◆ Self lubricating track systems





- ◆ Fully Demountable & Relocatable Partitions
- ◆ Various Thickness 20mm - 96mm
- ◆ Good acoustic features upto 46 Db
- ◆ Wide range of finish options
- ◆ Design flexibility
- ◆ Minimal disruption
- ◆ Easy to assemble





WASHROOM CUBICLES

PRODUCT RANGE

CAPABILITIES & NETWORK

COMPANY DATA

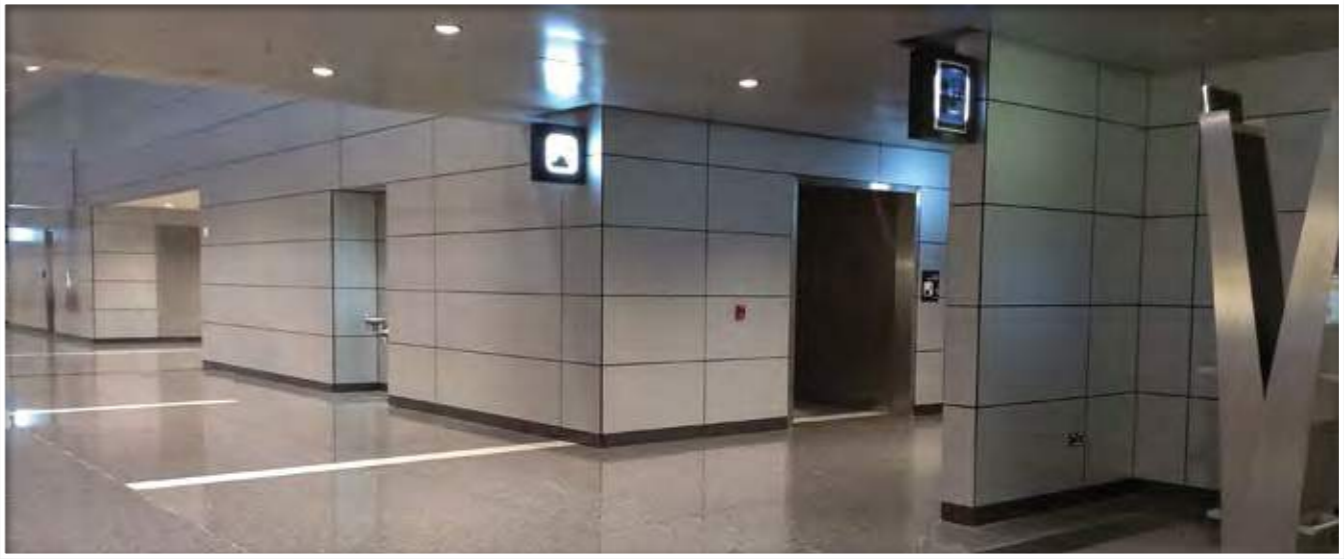
**LOCKER SYSTEMS**

We produce a range of products from High Pressure Compact Laminates.

- ◆ Scratch and wear resistant
- ◆ Unaffected by moisture
- ◆ Unaffected by intensive usage
- ◆ Low environment impact

We use the highest quality of Hardware sourced from the finest Manufacturer's from around the World





OUTDOOR FURNITURE

INTERNAL WALL CLADDING

PRODUCT RANGE
CAPABILITIES & NETWORK
COMPANY DATA



Dry Marker Boards



Interactive Boards



Classroom Furniture



- ◆ Best materials
- ◆ Porcelain writing surface
- ◆ Humidity proof
- ◆ Aluminium backing
- ◆ Anodized frames
- ◆ Silicon-mastic seal

EDUCATION & PRESENTATION AIDS



- ◆ Lightweight but durable
- ◆ 100% Recyclable
- ◆ Easy to Install
- ◆ Unlimited Customization
- ◆ Smartly designed architectural options
- ◆ Proven acoustic performance
- ◆ Comes with a wide range of colors and finish options that enhances the look and functionality of your space



Hydraulic Bi-folding Doors and Windows System



- ◆ No floor track is required and simple to use.
- ◆ Safe to use. Manual lower systems in case of power failure.
- ◆ Integral mounting frame to limit loads on the structure
- ◆ The use of hydraulics eliminates the need for limit switches .
- ◆ Full perimeter weather seals.

acristalia
Glass Enclosures for Terrace Solutions



- ◆ Has a product range of sliding roof, sliding curtain, glass curtains, glass railings, windbreaks, and bioclimatic pergolas for your project needs.
- ◆ Designed to create a bigger and brighter open space.
- ◆ Minimalist design, transparency, and functionality that transform the space and provide excellent yet safe views.
- ◆ Allows natural light to pass through.
- ◆ Easy to install.

SERVICE AND MAINTENANCE



FREE FIRST-TIME
PARTITION INSPECTION

Gibca offers an extensive selection of Service & Maintenance options to enhance your experience with our products. Choose from a wide range of customized maintenance packages to meet your specific needs.

Preventive Maintenance

Recovering Services

Emergency Repair Services

Retrofit Options Available

SERVICE AND MAINTENANCE PROGRAM

- Triannual Services - 3 Maintenance Services Annually
- Half Yearly Services - 2 Maintenance Services Annually
- Annual Services - 1 Maintenance Service Annually



GENERAL

- Adjusting all panels, pass doors and pocket doors to a plumb condition.
- Lubricating all trolleys, hinges, and other moving parts.
- Track cleaning and lubricating.
- Checking all panels, alignment, leveling and face finishes.
- Checking electric motors, switches, and drive components.
- Staff training provided for partitions operation and basic maintenance.



FINISHES

- Finish changes for worn or scuffed operable panels.
- Offering largest inventory of designer wall coverings to choose from: carpet, vinyl, fabric, laminate, wood, steel, glass, mural, and paint.
- Smooth-out cosmetic and surface damage.



REPLACEMENT AND RECONDITIONING

- Manufacturing outdated parts to keep your current operable walls in an excellent working condition.
- Replacement of seals and activation hardware.
- Reconditioning of trolleys, track, intersections, and switches.



REFURBISHMENT

- Demolishing and replacement of old partitions.
- Repair and adjust to factory specification.
- Relocation and rerouting of existing operable walls.
- Partition and track replacement.



ACOUSTIC

- Securing loose acoustic seals.
- Improve the soundproofing of partition walls and building envelope.

OUR VISION IS TO BE A LEADER
IN THE INDUSTRY FOR THE
REGION AND BEYOND.

A THANK YOU TO ALL OUR
INTERNATIONAL PARTNERS
FOR THEIR ASSISTANCE IN
MAKING OUR PRESENCE
FELT AROUND THE WORLD



TECHNICAL RESOURCE PARTNERSHIP



PRODUCT RANGE

CAPABILITIES & NETWORK

COMPANY DATA



Over the years we have created a modern and efficient Production facility to service our Customers.

The emphasis is Research, latest Equipment and Machinery, Production efficiencies and an obsession with Quality. It is our endeavor to constantly adapt the best International Industry practices. Hence, training is an integral part of our operation.

Our products adorn the best of Interior Spaces across the region. It becomes our responsibility therefore to pay attention to two very important areas:

- Conserving energy
- Optimum use of natural resources

We carefully monitor our production processes and our suppliers to ensure we meet the international standards required for Environmental Sustainability.





Tanweer Farooqi
GM

Gibca Furniture Industry prides itself in being a customer centric and customer driven company. Client needs and requirements determine our path. We have a young, dynamic and competent team of professionals who form the backbone of our operations.

A team trained not just to excel in the today but to explore the technologies of tomorrow. From making available technical data and inputs to Architects, Consultants and Designers, to evaluating site requirements, to customize manufacturing in keeping with stringent international standards, to efficient installation and post sales care, we are all about perfection.

WE SERVE SEVERAL MARKET SEGMENTS OFFERING THEM PREMIUM PRODUCTS, QUALITY SERVICE AND AN EXCEPTIONAL CUSTOMER SERVICE EXPERIENCE



	HOTELS & RESIDENCES	BANKS, OFFICES, PUBLIC BUILDINGS & GOVERNMENT SECTORS	CONVENTION CENTERS	AIRPORTS	METRO & RAIL	HOSPITALS & CLINICS	EDUCATIONAL SECTORS	RETAIL & LEISURE CENTERS	SPORTS COMPLEXES	LEISURE PARKS
ACOUSTIC MOVABLE WALLS										
HORIZONTAL	✓	✓	✓	✓	✓	✓	✓	✓	✓	✓
GLASS WALLS	✓	✓	✓	✓	✓	✓	✓	✓	✓	✓
AUTOMATIC HYDRAULIFT DOORS & WINDOWS	✓	✓	✓							
OFFICE PARTITIONS	✓	✓	✓	✓	✓	✓	✓	✓	✓	✓
HPL COMPACT LAMINATE SOLUTIONS										
INTERIOR APPLICATIONS										
WASHROOM CUBICLES	✓	✓	✓	✓	✓	✓	✓	✓	✓	✓
INTEGRATED PANELS	✓	✓	✓	✓	✓	✓	✓	✓	✓	✓
VANITY UNITS	✓	✓	✓	✓	✓	✓	✓	✓	✓	✓
LOCKERS	✓	✓	✓	✓	✓	✓	✓	✓	✓	✓
WALL CLADDING	✓	✓	✓	✓	✓	✓	✓	✓	✓	✓
EDUCATION & PRESENTATION AIDS										
MAGNETIC, TACK, AND DRY MARKER BOARDS		✓					✓			
CLASSROOM FURNITURE							✓			
EXTERIOR APPLICATIONS										✓

PRODUCT RANGE

CAPABILITIES & NETWORK

COMPANY DATA

CONVENTION CENTRES



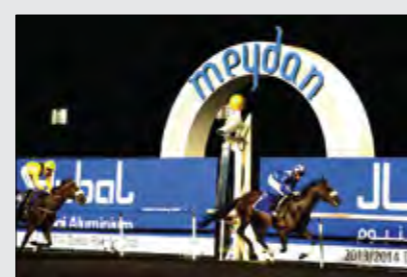
BANKS, OFFICES,
PUBLIC BUILDINGS



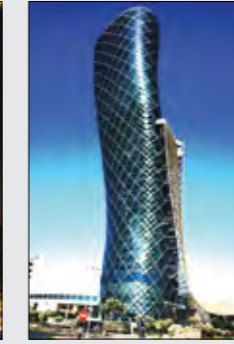
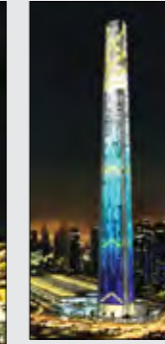
HOSPITALS & CLINICS



AIRPORTS



SPORTS COMPLEXES



HOTELS



EDUCATION INSTITUTIONS



METRO & RAIL



MALLS & STORES

GIBCA FURNITURE INDUSTRY CO. LTD. LLC

Address P O BOX 20923
AJMAN, UAE

Telephone + 971-6-7436888

Fax + 971-6-7436903

Email info@gfiuae.com

Website www.gfiuae.com

Paid up Capital AED 10,000,000

Shared Capital AED 10,000,000

Established October, 1992 ,13

Bankers UNITED ARAB BANK
Main Branch, PO Box 881
SHARJAH, UAE



Think Space Management Think Gibca



HUFCOR Movable Glasswalls



HUFCOR Operable Walls



GIBCA Washroom Cubicles
Locker Systems
Internal Wall Cladding



HUFCOR Vertical Lift Walls



GIBCA Office Partition Systems



GIBCA Pivot Doors



GIBCA FURNITURE INDUSTRY CO. LTD. (LLC)

P. O. Box 20923, AJMAN - UAE

Tel : +971-6-7436888, Fax : +971-6-7436903

E-mail : info@gfiuae.com, Website : www.gfiuae.com



Please scan this QR code
with your Smartphone!