



# COLLECTION 2018

COMPACT SOLID GRADE LAMINATE



**FUNDERMAX**®

for  
people  
who  
create



**INTERIOR**

**GIBCA**



جی بی کا

GIBCA FURNITURE INDUSTRY CO. LTD. (LLC)



# About Gibca

Gibca Furniture Industry Co. LTD. (LLC), part of Gibca group, is a leading manufacturer of premium contract furniture. Since our establishment in the 1990s, we have provided innovative and quality work space solutions for over 50,000 installations throughout Middle East, Central Asia and Africa. By fostering the culture of innovation and creativity we've established ourselves as the region's leading space management solution providers.

Understanding our every client's objectives, we work with them to create work space solutions for today and give them the flexibility for future change. Our modern state of the art facility allows us to develop innovative and quality products to serve our client's needs.

Our highly-qualified technical team provides customized service to our clients from the design phase to the after sales service. They work with each client to identify their project objectives, make knowledgeable recommendations, prepare quotes, technical drawings and budgets. Our range of highly engineered products are build and assembled in our state of the art facility under strict quality controlled environment. When working with us, you can rest assured that the product you receive is of top quality workmanship.



# About Fundermax

FunderMax is an Austrian company steeped in it's rich tradition, culture and values. FunderMax has grown organically just like the raw material they use for their products. It has transformed from a small family owned business into an international leader in the industry. Their roots are in the art of wood processing. Their product portfolio includes the highest quality materials made from wood and laminates.

FunderMax is constantly growing and evolving. Pushing the boundaries of creativity, they are the industry's leading trendsetters. They provide dedicated service to their industrial and private sector clientele and are committed to their employees. FunderMax's ultimate goal is to inspire through their designs and produce high quality products that adds great value to their client's projects.



## What Can Max Compact Interior Do?

Fundermax compact interior panels are high-pressure laminate panels (HPL) manufactured to standard EN 438 that are produced in laminate presses under high pressure at high temperature. They are particularly suitable for demanding and decorative applications (e.g. furniture, office furniture, wall cladding, sanitary facilities etc.).



scratch resistant

solvent resistant

food grade

impact resistant

durable



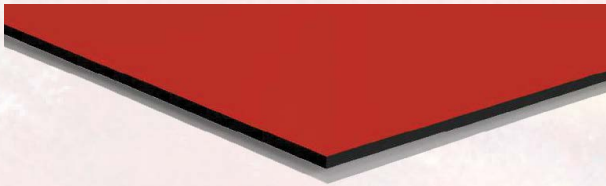
heat resistant



easy to clean



quick installation



### Properties\*:

\_\_scratch resistant

\_\_solvent resistant

\_\_food grade

\_\_heat resistant

\_\_easy to clean

\_\_hygienic

\_\_impact resistant (EN ISO 178)

\_\_suitable for all interior applications

\_\_decorative

\_\_self-supporting

\_\_abrasion proof

\_\_frost and heat resistant

-80°C bis +80°C

\_\_bending resistant (EN ISO 178)

\_\_easy to install

\_\_durable

\_\_resistant to chemicals

### Standard Surface:



#### FH – FINE HAMMER EMBOSSED

Versatile, easy to clean and highly resistant. One of our classic surfaces which has proved itself in interior design for many years.

### Premium Surface:



#### MT – MATT

This surface provides just the right balance between matt and shimmering elements. Impressive with its neutral appearance.

\*Price varies based on SURFACE type

\*MT - only available in black or black F-quality core.

\*May not be suitable in all applications.

# TECHNICAL DATA SHEET

Grade: Standard  
Standard Surface: FH  
Length: 4100 mm / 2800 mm\*  
Width: 1854 mm / 1300 mm\*  
Thickness: 2 mm - 20 mm

## FunderMax Compact Interior Panels (HPL) acc. to EN 438

Properties tested inacc. to EN 438-2	Unit of measurement	Max Compact		Max Compact F-Quality		Max Alucompact42		Max Alucompact Arrigo		Max Alucompact Quattro		Max Compact IP		Max Compact IP F-Quality		Max Resistance		Max Alucompact42 IP		Max Compact with white core	
		Standard <sup>1)</sup> Value <sup>2)</sup>	CGS	CGF	Value <sup>2)</sup>	Value <sup>2)</sup>	Value <sup>2)</sup>	Value <sup>2)</sup>	Value <sup>2)</sup>	Value <sup>2)</sup>	Value <sup>2)</sup>	Value <sup>2)</sup>	Value <sup>2)</sup>	Value <sup>2)</sup>	Value <sup>2)</sup>	Value <sup>2)</sup>	Standard <sup>1)</sup> Value <sup>2)</sup>	Standard <sup>1)</sup> Value <sup>2)</sup>			
Type acc. to EN 438			CGS	CGF								CGS	CGF								
<b>Physical data</b>																					
Apparent density DIN 52350/ISO 1183	g/cm <sup>3</sup>	≥ 1,35	≥ 1,4	≥ 1,4	ca. 1,55	ca. 1,55	ca. 1,65	≥ 1,4	≥ 1,4	≥ 1,4	1,55	≥ 1,4	1,55								
Weight	kg/m <sup>2</sup>		14,0	14,0	15,5	15,5	16,5	14,0	14,0	14,0	15,5	15,5									
<b>Mechanical properties</b>																					
Resistance against stress abrasion	U	≥ 350	450	450	450	450	450	450	450	450	450	450	450	450	450	450	450	450	450	450	450
Falling ball impact resistance EN 438-2, point 21	mm	≤ 10	8	8						8	8	8									
Resistance against scratching EN 438-2, point 25	degr./scratch r.	≥ 3 ≥ 4N	3 4N	3 4N	3 4N	3 4N	3 4N	3 4N	3 4N	3 4N	3 4N	3 4N	3 4N	3 4N	3 4N	3 4N	3 4N	3 4N	3 4N	3 4N	3 4N
Flexural strength EN ISO 178	MPa	≥ 80	100	90	200	200	200	100	90	100	200	80	80								
E-Modulus EN ISO 178	MPa	≥ 9000	10000	9500	18000	18000	18000	10000	9500	10000	18000	9000	9000								
Tensile strength EN ISO 527-2	MPa	≥ 60	60	80				60	80	60		60	60								
Susceptibility to cracking EN 438-2, point 24		4	5	5				5		5		3	4								
<b>Thermal properties</b>																					
Dimensional changes during climatic changes, measured at elevated temperatures EN 438-2, point 17	length. % cross. %	≤ 0,3 ≤ 0,6	0,05 0,15	0,15 0,25	0,15 0,25	*)	*)	0,05 0,15	0,15 0,25	0,05 0,15	0,15 0,25	≤ 0,5 ≤ 0,8	≤ 0,5 ≤ 0,8								
Resistance to boiling water EN 438-2, point 12	%	≤ 2,0	0,3	0,5	0,3	*)	*)	0,3	0,5	0,3	*)										
Coefficient of thermal expansion DIN 52328	1/K		20 x 10 <sup>-6</sup>	20 x 10 <sup>-6</sup>				20 x 10 <sup>-6</sup>	20 x 10 <sup>-6</sup>	20 x 10 <sup>-6</sup>											
Thermal conductivity I	W/mK		ca. 0,3	ca. 0,3				ca. 0,3	ca. 0,3	ca. 0,3											
Resistance to vapour diffusion			17.200μ		730.000μ			17.200μ		17.200μ	730.000μ										
Surface resistance DIN 53482	Ohm		10 <sup>9</sup> -10 <sup>11</sup>	10 <sup>9</sup> -10 <sup>11</sup>				10 <sup>9</sup> -10 <sup>11</sup>	10 <sup>9</sup> -10 <sup>11</sup>	10 <sup>9</sup> -10 <sup>11</sup>											
Resistance to cigarette burns EN 438-2, point 30	Degree	≥ 3	5 - no visible changes <sup>3)</sup>										≥ 3	5							
Resistance to hot sourcepans EN 438-2, point 16	Degree	≥ 4	5 - no visible changes, no blisters or cracks <sup>4)</sup>										≥ 4	5							
Heating value	MJ/kg		18 - 20																		
<b>Optical properties</b>																					
Light fastness no. EN 438-2, pt. 27 <sup>5)</sup>	Level	≥ 4	≥ 4	≥ 4	≥ 4	≥ 4	≥ 4	≥ 4	≥ 4	≥ 4	≥ 4	≥ 4	≥ 4	≥ 4	≥ 4	≥ 4	≥ 4	≥ 4	≥ 4	≥ 4	≥ 4

Table 2

Reaction to fire classification	Fire behavior	
	Compact Interior	Compact Interior F-Quality
Europe EN 13501-1 Euroclass	D-s2, d0	B-s2, d0/B-s1, d0 <sup>6)</sup>
Austria A3800/1	Tr1, Q1	Tr1, Q1
Switzerland fire classification		5(200 <sup>3)</sup>
Germany DIN 4102	B2	B1

Table 3

<sup>1)</sup> according to EN 438

<sup>2)</sup> Average values of production control

<sup>3)</sup> Slight change in glossy finish, yellow or light brown colours are permitted by EN 438

<sup>4)</sup> Slight change in glossy finish permitted by EN 438

<sup>5)</sup> grey scals after light exposure acc. blue wool scale 6

<sup>6)</sup> for 6-20 mm if mounted with max. gap of 15 mm acc. to classification Report MA39-VFA2014-1629

\*) These qualities are only suitable for inner lining. The panels should not be exposed to high fluctuations of temperature or moisture. (Recommended range: +15 -+35°C, 30 -70% rel. to air moisture)

\*Sheet size varies based on finish type.

\*Panels are guaranteed for 10 years warranty from the delivery date.





*Brand your space to convey  
your business philosophy*





**2124** Camomilla



**0010** Mango



**0011** Mandarin



**0210** Intensive Red



**0318** Ruby Red



**0013** Minola



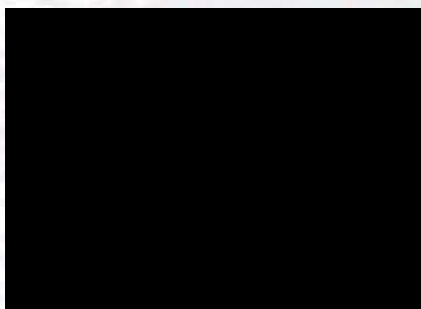
**0174** Terrana



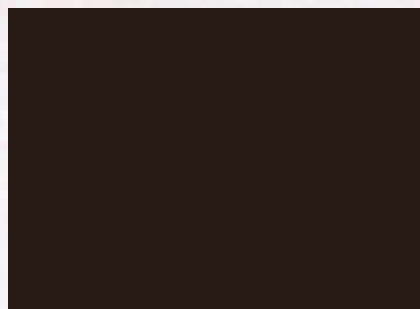
**0020** Ballerina



**0018** Divaro



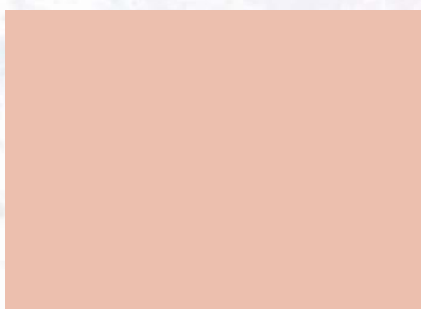
**0080** Black



**0648** Dark Brown



**2206** Fango



**0019** Rosalie



**0630** Sea Green



**0042** Marino

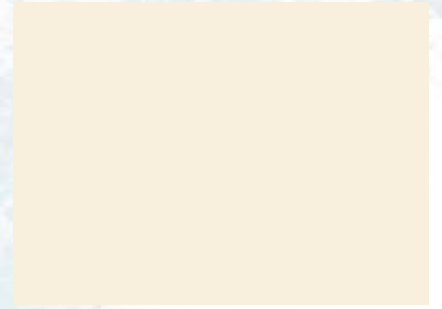




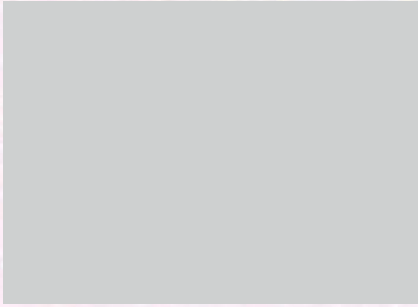
**0725** Yellowish Green



**0755** Warm Grey Dark



**0733** Hygienic White



**0730** Ash Gray



**0753** Cool Grey Medium



**0851** Winter White



**0718** Arctic



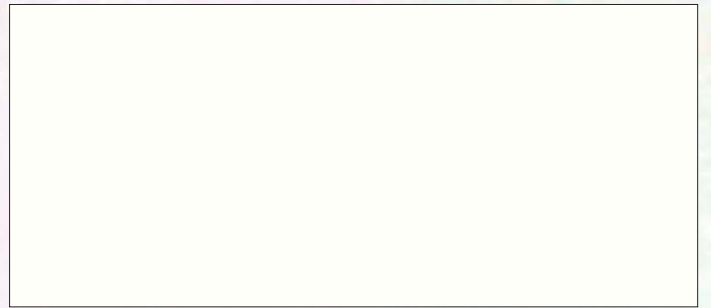
**0717** Atlantic



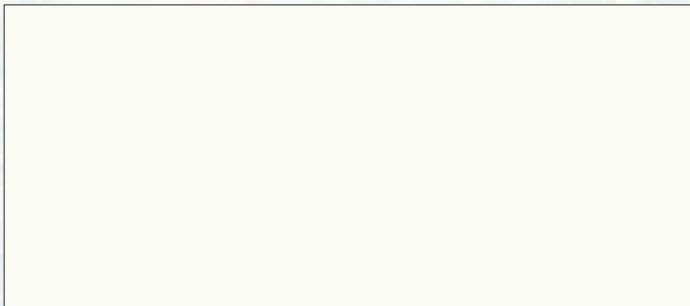
**0023** Lamar



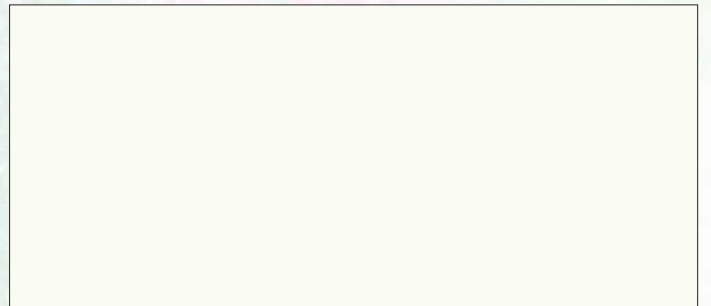
**2313** Ceramic White



**2286** White Syringa



**0112** Top White



**0085** White





*Bring the outdoors in*  
*Get inspired by the diversity of nature*







**0102** Maple



**0252** Madera



**0269** Tosca



**0260** Arezzo



**0290** Akari



**0411** Albatros



**0538** Charles



**0720** Natural Savanna



**0474** Calimero



**0599** Orca



**0813** Rocco



**0171** Tundra Birch



**0424** Callisto



**0244** Santos



**0175** Knot Fir





**0291** Beech II



**0047** Wild Beech



**0125** Natural Oak



**0320** Sereno



**0331** Fortuna



**0417** Apollo



**0186** Margo



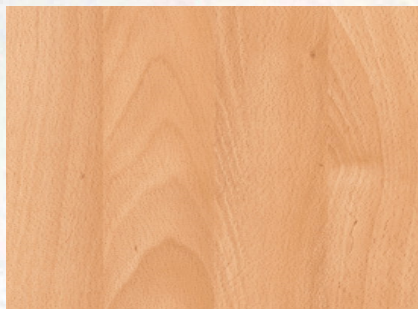
**0229** Silvretta



**0540** Aristo



**0332** Mirabell



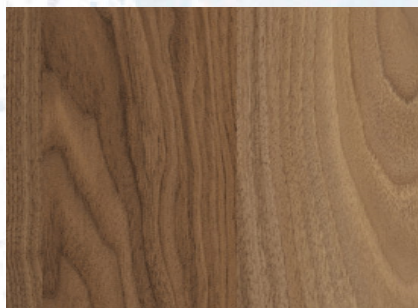
**0157** Obir Beech



**0048** Cognac Oak



**0049** Stone Oak

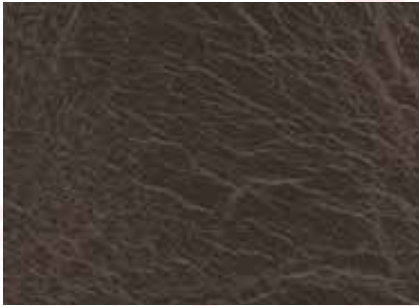


**0811** Cello



**0179** Lunara





**0528** Saloon



**0567** Manga



**0328** Brushed Aluminium



**0493** Prisma



**0569** Domus



**0527** Lana



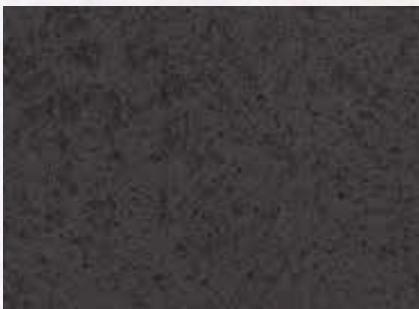
**0499** Linea



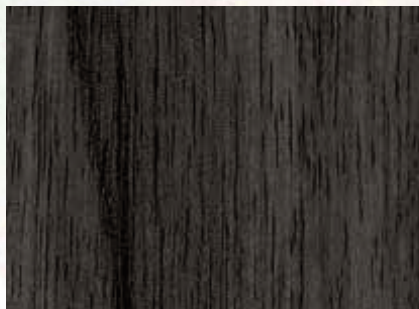
**0505** Vesper



**0565** Polaris



**0566** Kara



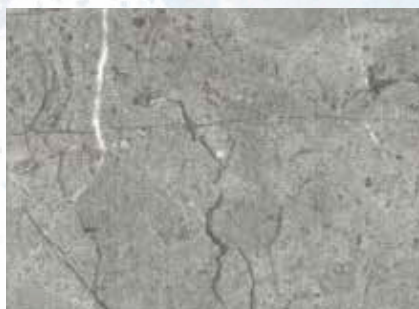
**0534** Monsun



**0533** Sphinx



**0469** Barista



**0585** Castello



**0590** Adora





***Be different. Be inspired. Bring your vision to life.***  
*Let your ideas come to life with our unique interior products.*



Please scan this QR code with your Smartphone!



GIBCA FURNITURE INDUSTRY CO. LTD. (LLC)

📍 P. O. Box 20923, AJMAN - UAE, ☎️ +971-6-7436888, 📠 +971-6-7436903,  
 ✉️ info@gfiuae.com, 🌐 www.gfiuae.com

