

Metal Trim

STANDARD COLOR SELECTOR

FOR OPERABLE WALLS

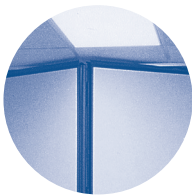
(SEE BACK FOR SUMMIT™ VERTICAL LIFT PARTITION TRIM OPTIONS)

Hufcor operable partitions have protective horizontal and vertical edge trim. The trim helps protect the panels during movement and use.

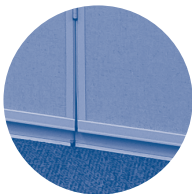
Lamb's Wool, Gray and Brown are standard trim colors. Choose one of these colors at no charge.

Additional trim colors are available for an upcharge. See your Hufcor representative for information and specific pricing.

(SEE BACK FOR SUMMIT™ VERTICAL LIFT PARTITION TRIM OPTIONS)

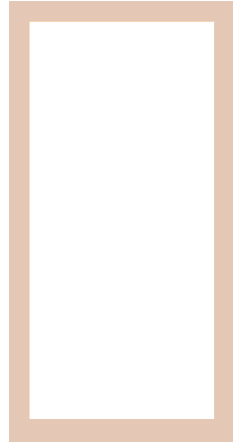
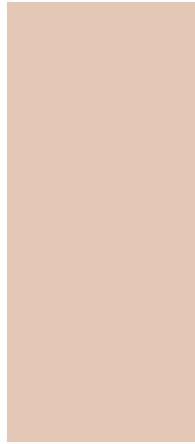


Vertical and Horizontal Trim (Brown shown)

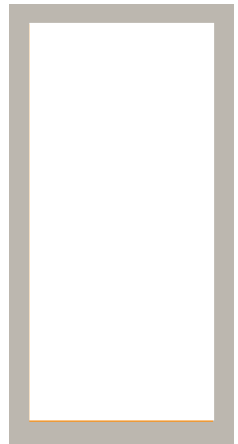
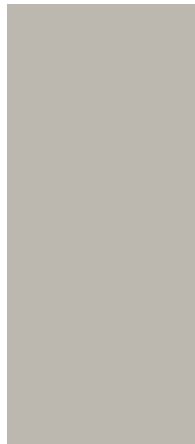


Vertical and Horizontal Trim (Lamb's Wool shown)

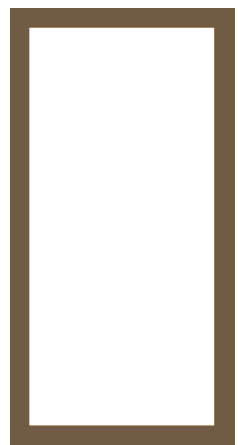
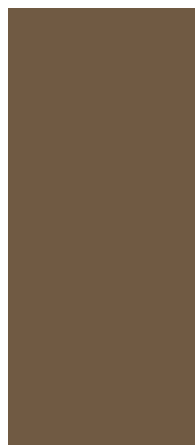
Note: The vertical trim extends only 1/2" [12.7mm] onto the face of the panel per side. The colors shown are representative of the trim colors. The color provided may not be an exact match to the color shown on this selector due to variations in the printing process. Ask your Hufcor representative for a sample of the color if needed.



Lamb's Wool



Gray

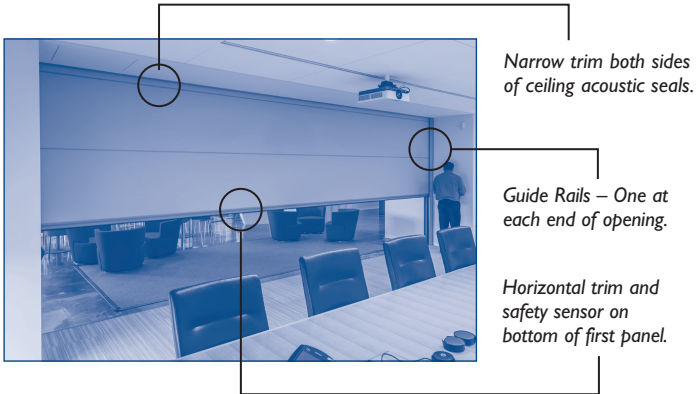


Brown

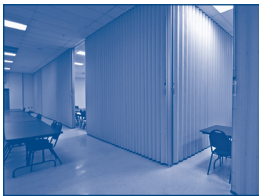
SUMMIT™ VERTICAL LIFT PARTITIONS TRIM

Select trim color for the exposed metal trim on Hufcor Summit Vertical Lift Partitions as shown below. Choose from standard trim colors: Lamb's Wool, Gray, Brown, or Clear Anodized Aluminum. Premium colors available for an additional charge with prior factory approval. Contact your Hufcor Representative for details.

SUMMIT METAL TRIM IS FOR AREAS CIRCLED IN PHOTO. CHOOSE ONE COLOR.



GLASS WALL



ACCORDION DOORS

Hufcor offers the widest variety of space division products from a single source. In addition to operable partitions, we offer glass operable walls, accordion doors and vertical lift partitions.

We specialize in custom engineering products when "standard" won't do for your needs. Contact your local Hufcor Representative or visit our website to learn more about how Hufcor can help solve your space division problems.



World Leader in Flexible Space ManagementSM

P.O. Box 5591 (zip 53547)
2101 Kennedy Road (zip 53545)
Janesville, WI USA
Toll-Free 800-542-2371 ext. 214
Telephone 608-756-1241
Fax: 608-758-8253
E-mail: info@hufcor.com
www.hufcor.com

F-3995C MTHSR 3/2014 3M

Due to Hufcor's continuous product improvement program, we reserve the right to improve and change product without notice.



USGBC and related logo is a trademark owned by the U.S. Green Building Council and is used by permission.